



Fresno County LPC Strategic Plan 2020-25



Table of Contents

Fresno County Child Care and Development LPC Members	3
Executive Summary	4
LPC History and Background	5
Composition of the LPC.....	5
Mission Statement.....	5
Fresno County Demographics and Population.....	6
Action Plan.....	9
Closing Statement	10
Acknowledgments	11



**Fresno County
Child Care and Development LPC Members as of January 1, 2020**

**Greg Melton
Chairperson**
Clovis Unified School District

**Hannah Norman
Secretary**
First 5 Fresno County

Janelle Bryson
Sierra Unified School District

Conne Cleveland
West Hills Community College

Shirley Harris
Jack & Jill's Educational Center

Lynette Ferguson
New Life Discovery Schools

Sandra Flores
Richard Heath & Associates (RHA)

Megun Gunn
Fresno County Department of Public
Health

Nikki Henry
Fresno Unified School District—
Superintendent's Office

Lupe Jaime-Mileham
The Office of the Fresno County Su-
perintendent of Schools—Early Care
& Education

Deborah Lewis
Fresno City College

Sara Lopez
Fresno EOC—Head Start / Early
Head Start

Laura Mitchell
Fresno Unified School District

Helena Silva
The Office of the Fresno County Su-
perintendent of Schools—Safe &
Healthy Kids

Megan Tupper
Kings Canyon Unified School District

Al Vital
VDA Inc.

Christine Mendez
Fresno County Department of
Social Services
Ex-Officio

Matilda Soria
The Office of the Fresno County
Superintendent of Schools—Early
Care & Education
Ex-Officio



Motto

Helping children discover their future.

-Author unknown

Executive Summary

The Fresno County Child Care and Development Local Planning Council (LPC) was established as a result of the passage of California Legislation, AB1542, and is required to “prepare a comprehensive countywide Early Care and Education (ECE) plan designed to mobilize public and private resources to address identified needs.” The LPC created this strategic plan to promote a quality child care system that meets the needs of all the children and families of Fresno County. The plan’s activities are designed to reach the needs of the County’s diverse populations. Among these populations are:

- Families with infants, toddlers, preschoolers, and/or school age children (ages 0-12).
- Low income families – those with incomes at or below the State Median Income including Cal-WORKS participants.
- Families with Special Needs – children with physical disabilities, learning disabilities, and/or behavioral issues and parents with disabilities.
- Families in crisis – children at risk of abuse, neglect, and/or exploitation.
- Migrant/seasonal working families – those whose primary income comes from the agriculture or fishing industries and may relocate in order to gain or maintain employment.
- Teen parents – a custodial parent 13-19 years of age.
- Families above the State Median Income.
- Families in need of non-traditional care – “drop-in” care, care during evenings, weekends, etc., and care for children that are mildly ill.



Local Planning Council (LPC) History and Background

The LPC was established in April 1998 as a result of welfare reform legislation AB1542. Half of the appointees to the 30-member council are appointed by the Fresno County Board of Supervisors and half by the Fresno County Superintendent of Schools.

The mission of the Fresno County Child Care and Development Local Planning Council (LPC) is as follows: *a forum which supports planning and action countywide to promote a quality child care system that meets the needs of all children and families of Fresno County.* Further, the primary responsibilities of the LPC are to assess child care needs throughout Fresno County and to plan for child care services based on the needs of families. Through collaborative efforts with individuals and organizations interested in positive outcomes for Fresno County's children and families, the LPC supports the child care infrastructure by coordinating services. The LPC determines local priorities for new state and federal funds and is committed to public and private partnerships. Strong community partnerships allow all participants to share ideas and concerns during the planning process.

Composition of the Local Planning Council

As mandated by California Education Code Section 8499.3, membership of the LPC reflects diversity of interests and expertise with the following categories:

- 20% child care consumers – a parent/guardian who receives, or who has received child care services within the past 36 months.
- 20% child care providers – a person who provides early care and education services and represents the diversity of the types of child care providers in the County.
- 20% community representatives – a person who represents an agency or business that provides private funding for child care services or who advocates for child care services through participation in civic or community-based organizations, but is not a child care provider.
- 20% public agency representatives – a person who represents a city, county or local education agency.
- 20% discretionary appointments – appointed from any of the above categories or outside of these categories at the discretion of the appointing agencies.



Fresno County Demographics and Population

Centrally located, Fresno County is the financial, industrial, trade, and commercial capital of the San Joaquin Valley. Sprawling over 6,017.4 square miles, Fresno County is the sixth largest county in size in California. The geographic sprawl of the county makes transportation a major challenge to access child care programs. The region is rich in heritage, resources, and people, and is home to a diverse mixture of industries, businesses, agencies and public, private and educational institutions. Fresno County is the tenth most populous county in California with an estimated population of 1,006,250.



Figure 1. Map of Fresno County

Source: U.S. Census, 2020

Table 1. Children in Fresno County

Age	Population
Children 0-12	206,472
Under 2	30,884
2 years	15,047
3 years	15,916
4 years	17,285
5 years	13,987
6-12 years	113,353

Table 2. Demand

Availability of Licensed Care	
Number of Children 1-12 with parents in the labor force	117,744
Estimated number of licensed child care slots	22,705
Licensed care available for children with parents in the labor force	19.3%

Income

Median Household Income in 2018.....	\$47,763
Families living in Poverty.....	26%
Children 0-5 living in Poverty.....	33%

Cost of Licensed Care

Care for one infant/toddler	
Licensed family child care home.....	\$8,930
Licensed center-based.....	\$13,206
Care for one preschooler	
Licensed family child care home.....	\$9,290
Licensed center-based.....	\$8,334

Sources: California Child Care Resource & Referral Network, 2019; KidsData.org, 2018; Early Learning Needs Assessment Tool, 2018

Creating a Strategic Plan for Fresno County

The Fresno County LPC has developed a countywide, early care and education (ECE) strategic plan – a road map to be embraced not only by the LPC, but by any Fresno County agency, organization or community group interested in improving the child care delivery system. The LPC believes that the key to achieving the goals set forth in this document is effective partnerships. Each partner brings unique expertise and resources to address the issues.

The Fresno County LPC collaborated with the data collection and planning efforts of other county-wide initiatives, including Fresno Cradle to Career (Fresno C2C), the Preconception to Age 5 Blueprint for Funding and Advocacy, and Fresno DRIVE (Developing the Region’s Inclusive and Vibrant Economy) to ensure alignment and integration, and ultimately achieve greater collective impact. Further, the following overarching goals of our strategic plan align with the Fresno County Community Agenda which each listed county-wide initiative has adopted (see figure below).

1. Community Awareness—*To support community partnerships and establish a one-voice message on the importance of ECE and programs serving children to age 12*
2. Quality Workforce Development—*To work with community partners to build capacity of agencies implementing ECE programming to deliver high quality ECE through professional development and career development*
3. Access and Capacity—*To increase number of early care and education slots to serve all children in Fresno County*

The Fresno County Community Agenda is a life-course framework that “highlights the research-based on-track outcomes that lead to a life of wellbeing, as well as the off-track challenges that too often derail that journey (fresnoc2c.org/what-we-do).”

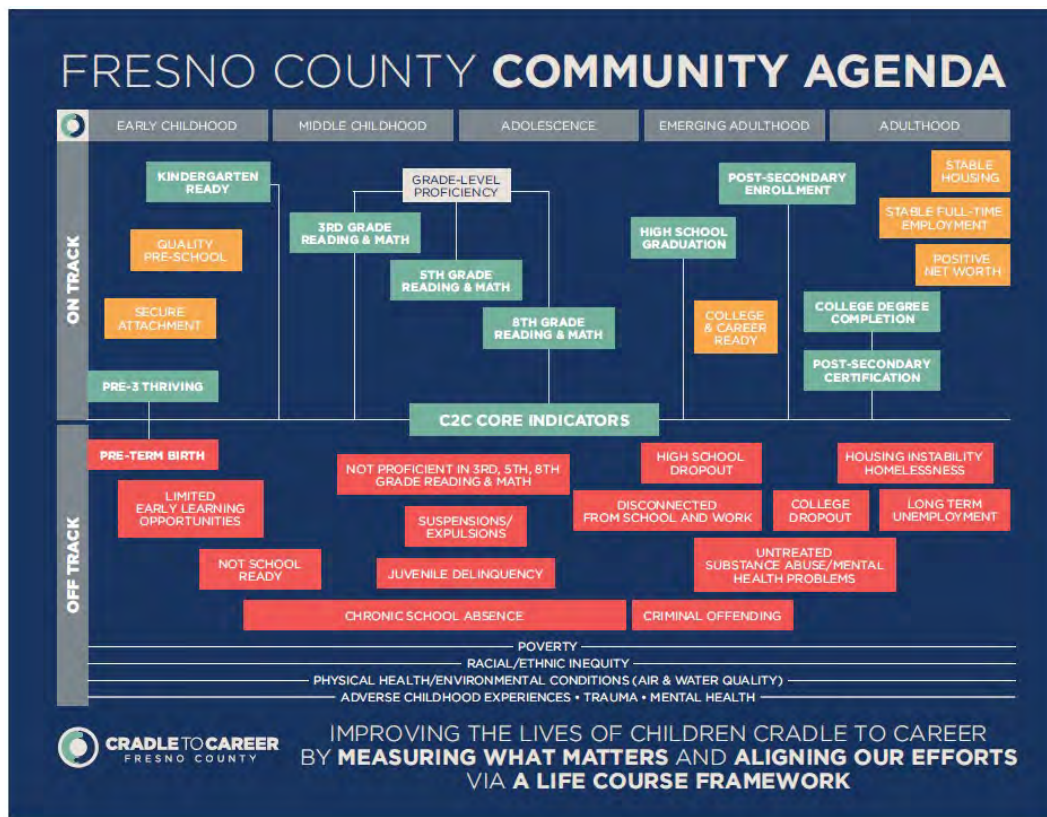


Figure 2. Fresno County Community Agenda

Source: Fresno C2C, 2019

ACTION PLAN

GOAL 1: Community Awareness

To support community partnerships and establish a one-voice message on the importance of ECE and programs serving children to age 12

Actions

- Revamp and maintain the LPC website
- Advocate to maintain/increase local, state, federal, and private funding for early care and education (ECE) programs
- Develop effective messaging about the importance of ECE
- Provide up-to-date info on state and federal regulations and legislative updates

Outcomes

- Present a clear and consistent message on the value of quality care and education and the need for equitable and adequate funding
- Educate parents, government officials, and community members about the importance of ECE for all children
- Support families to be their child’s first teacher

GOAL 2: Quality Workforce Development

To work with community partners to build capacity of agencies implementing ECE programming to deliver high quality ECE through professional development and career development

- Support policies and develop resources to increase the compensation of the early childhood workforce
- Coordinate serves for professional development for ECE workforce in collaboration with community partners (such as California Pre-school Instructional Network (CPIN), Program for Infant/Toddler Care of WestEd (PITC), Fresno County Department of Public Health (DPH), and Central Valley Children’s Services Network (CVSN)
- Expand affordable workforce training
- Develop a “Pathway to Quality” which involves the alignment, coordination, and expansion of existing quality improvement efforts, including Fresno County Early Stars, in addition to the California Child Care Initiative Project (CCIP) and Kaleidoscope

- Support and facilitate a county-wide system promoting the necessary skill development for an educated and knowledgeable ECE workforce
- Support training needs of the ECE community to create programs that are inclusive, culturally competent and meet the needs of special population, including DLLs.
- Promote quality standards within the ECE community

GOAL 3: Access and Capacity

To increase number of early care and education slots to serve all children in Fresno County

- Encourage programs to refer families to FindCare of CVCSN to learn about child care options
- A Centralized Eligibility List (CEL) will be developed and launched to prioritize children who have greatest need.
- Produce an annual Priorities report for the CA Department of Education showcasing priority areas

- Ensure all children will have access to quality child care
- Track, update, and analyze data that documents the need for ECE
- Increase awareness of the need for child care facilities
- Develop partnerships among business, child care, and education stakeholders

Closing Statement

This strategic plan is designed to be a flexible working document and will be reviewed by the LPC, as well as other community groups. As the dynamics of society and the state economy continually change, the ECE needs of Fresno County's families will also change. To maintain a system that is effective, modifications to strategies and action plans will be made to meet the evolving needs of children and families in Fresno County.

Through continued collaborative efforts, an on-going exchange of ideas and the review of recommended policies, this plan will guide Fresno County to the ultimate vision of ensuring that all children have the quality early experiences necessary to provide them with school and life success.



Acknowledgments

The Fresno County Child Care and Development LPC would like to acknowledge the many agencies, organizations, providers and community members throughout Fresno County who contributed to the development of this strategic plan.

Gratitude is extended to :

Jim A. Yovino, Fresno County Superintendent of Schools, and the members of the Fresno County Board of Supervisors for their ongoing support of the Council's efforts.

Dr. Matilda Soria, LPC Coordinator, The Office of the Fresno County Superintendent of Schools, for her effort devoted to the completion of this project.



The Fresno County Child Care and Development Council's Strategic Plan was created with planning council funds from the California Department of Education, Early Learning and Care Division

For additional copies of this report, please contact Dr. Matilda Soria
LPC Coordinator at msoria@fcoe.org.

